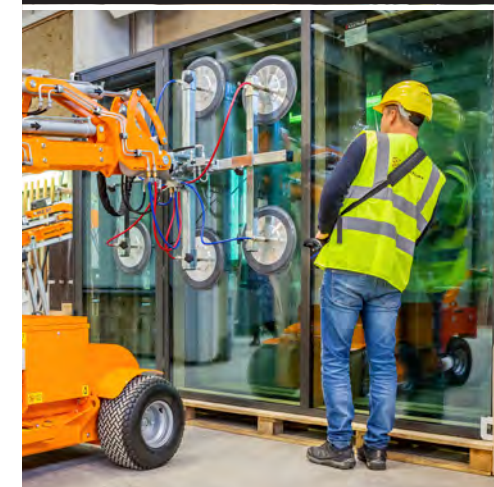


SMARTLIFT LIFTING SOLUTIONS



SMARTLIFT



SMARTLIFT - THE SAFE CHOICE

Made in Denmark

Every Smartlift is proudly made in Denmark. This means that we can ensure high-quality craftsmanship by sourcing core parts and materials mostly from local vendors.

Since 2008, we've been refining our production processes and embracing new technologies with our partners to enhance the functionality of our machines. Rigorous quality and functionality checks are standard, guaranteeing that every unit we produce meets the highest standards.

We invest in stock, parts, and service

We are committed to excellence not only in our products but also in our support. We train our own service technicians and those of our dealers to ensure expert assistance is readily available, whether at your company premises or directly on the construction site. Our warehouses, along with our dealers', are fully stocked with spare parts, allowing us to ship most orders the same day. This minimizes downtime and ensures your operations run smoothly.

We recommend that your Smartlift undergoes an annual service check to inspect moving parts, test the battery, and ensure all safety standards are met. This proactive maintenance helps keep your equipment in prime condition and your projects on track.

5 REASONS TO CHOOSE SMARTLIFT

→ Precision handling

Smartlift machines offer precise control and maneuverability, ensuring that heavy and fragile materials like glass, metal, and marble can be placed exactly where needed without risk of damage.

→ Enhanced safety

With Smartlift, the risk of accidents due to heavy lifting is significantly reduced. The lifter securely holds materials, preventing drops and reducing strain on workers, promoting a safer workplace.

→ Increased efficiency

Owning a Smartlift allows your business to handle more projects faster, thanks to the efficiency of the equipment. This efficiency can help you bid on and win larger and more prestigious projects.

→ Ease of use

Smartlifts are designed with user-friendly controls and are battery-powered for clean operation, making them easy to use on any job site without the need for specialized training. Additionally, their quiet operation ensures they can be utilized in noise-sensitive environments without causing disruptions.

→ Reliable support and longevity

Smartlift not only provides dependable support and maintenance but also ensures a long lifetime for each machine. With a comprehensive service network and a stock of readily available spare parts, we guarantee minimal downtime and continuous operation for years to come.



Choosing the right Smartlift

A CHECKLIST FOR SELECTING THE PERFECT SMARTLIFT

When considering the purchase of a Smartlift, it's crucial to evaluate several aspects to ensure the model you choose aligns with your needs.

- 1** Start by assessing the primary functions such as lifting capacity and height, and if you need vacuum suction. These determine the core performance of the Smartlift and ensure it meets your operational requirements.
- 2** Next, examine additional specifications that may affect usability, such as turning radius and suitability for indoor versus outdoor environments.
- 3** Decide on the type of machine that best fits your application, whether it requires manual or electric extension of the arm or a rotating yoke for better maneuverability of loads.
- 4** Consider potential assembly line enhancements such as an electric key switch, tires that do not mark surfaces, a specific color to match your company branding, a cordless remote for ease of operation, and a foldable handle for improved storage and transport.
- 5** Evaluate whether you'll need accessories to maximize utility and efficiency. Options could include ramps for easier loading, specialized suction cups for different materials, forks for handling varied loads, or additional hooks.

Our sales representatives, partners, and the Customer Service department are ready to assist you in making informed choices, ensuring you purchase a Smartlift that perfectly meets your specific requirements, equipped with the right features and accessories for optimal performance in your setting.



MULTI LIFTER MACHINES

TECHNICAL INFORMATION

	Lifting capacity arm in/out	Lifting height	Extension of arm	Tip from horizontal	Turning radius	L x W x H	Drive wheel(s)	Curb weight
SLI 208	440 / 410 lbs	7.55 ft	1.64 ft	54° back 100° fwd	3.28 ft	4.66 x 2.43 x 3.97 ft	Rear wheels	1020 lbs
SLI 250	550 / 290 lbs	10.66 ft	2.95 ft	56° back 62° fwd	4.13 ft	7.48 x 2.23 x 4.43 ft	Rear wheels	1100 lbs
SLI 250 HLE	550 / 110 lbs	13.45 ft	2.95 + 2.95 ft	56° back 62° fwd	4.13 ft	7.48 x 2.23 x 4.59 ft	Rear wheels	1250 lbs
SLI 409	950 / 770 lbs	9.02 ft	1.97 ft	53° back 131° fwd	4.82 ft	7.28 x 2.69 x 4.53 ft	Front wheels	1460 lbs
SLI 409 HLE	950 / 340 lbs	10.66 ft	1.97 + 1.97 ft	53° back 131° fwd	4.82 ft	7.61 x 2.69 x 4.66 ft	Front wheels	1500 lbs
SLI 609 HLE	1320 / 550 lbs	12.14 ft	2.30 + 2.95 ft	34° back 98° fwd	5.28 ft	8.27 x 2.72 x 5.05 ft	Front wheels	2070 lbs
SLI 1009	2200 / 880 lbs	14.27 ft	2.72 + 2.72 ft	44° back 80° fwd	6.89 ft	9.97 x 3.35 x 5.15 ft	Front wheels	3110 lbs

■ All SLI machines have 8-10 hours operation when fully charged.

The Smartlift Multi Lifter without a vacuum system offers several advantages for various industrial and construction settings

- **Versatile accessory compatibility**

The machine supports a range of accessories, enhancing its utility for different tasks.
- **Quick tool exchange**

Switching tools on this model is fast, reducing downtime between tasks.
- **Battery powered operation**

The machine is driven by batteries, producing no emissions and making it suitable for indoor use and environmentally sensitive areas.
- **Maneuverability in tight spaces**

This Smartlift can operate in areas where space is limited, and traditional forklifts cannot access.
- **Small turning radius**

The machine's compact turning radius allows for better handling and positioning in confined spaces.
- **Effective placement and installation capability**

It extends into tight spots to move, place, and install items, simplifying complex tasks.
- **Long battery life**

It runs for 8-10 hours on a full charge, supporting extended work periods without the need for frequent recharging.
- **No license required for operation**

Operators do not need a specific certificate to operate the machine (check local legislation), facilitating easier adoption and use within teams.



WATCH VIDEO: SLI 409

Watch the Smartlift SLI 409 in action at Teknologisk Institut, effortlessly moving a heavy heat pump on a pallet. This video demonstrates the SLI 409's precision and power, navigating through tight spaces and delicate flooring without the need for a traditional forklift.

Customer: Teknologisk Institut



SMARTLIFT INDOOR MACHINES

WHAT CHARACTERIZES INDOOR MACHINES?

- Narrow chassis
- Stable and maneuverable on even surfaces
- Small turning radius
- High lifting capacity relative to the machine size
- Rear-wheel drive
- No certification required for operation (check local legislation)
- Highly suitable for use in workshops, indoor construction sites, factories, homes, and many other places



WATCH VIDEOS



SL 208 INDOOR

The SL208 Indoor has a narrow chassis and a turning circle of just 2.89 ft, which makes the glass lifter easy to manoeuvre anywhere in the apartment building.

Customer:
DN Tømrer



SL 280 INDOOR

The Smartlift SL280 Indoor provides high usability for the operator, efficiency and precision during installation and a safe work environment with no heavy lifting for the employees. The Smartlift runs safely on the ice, while keeping the window in balance at all times.

Customer:
Odense Idrætspark

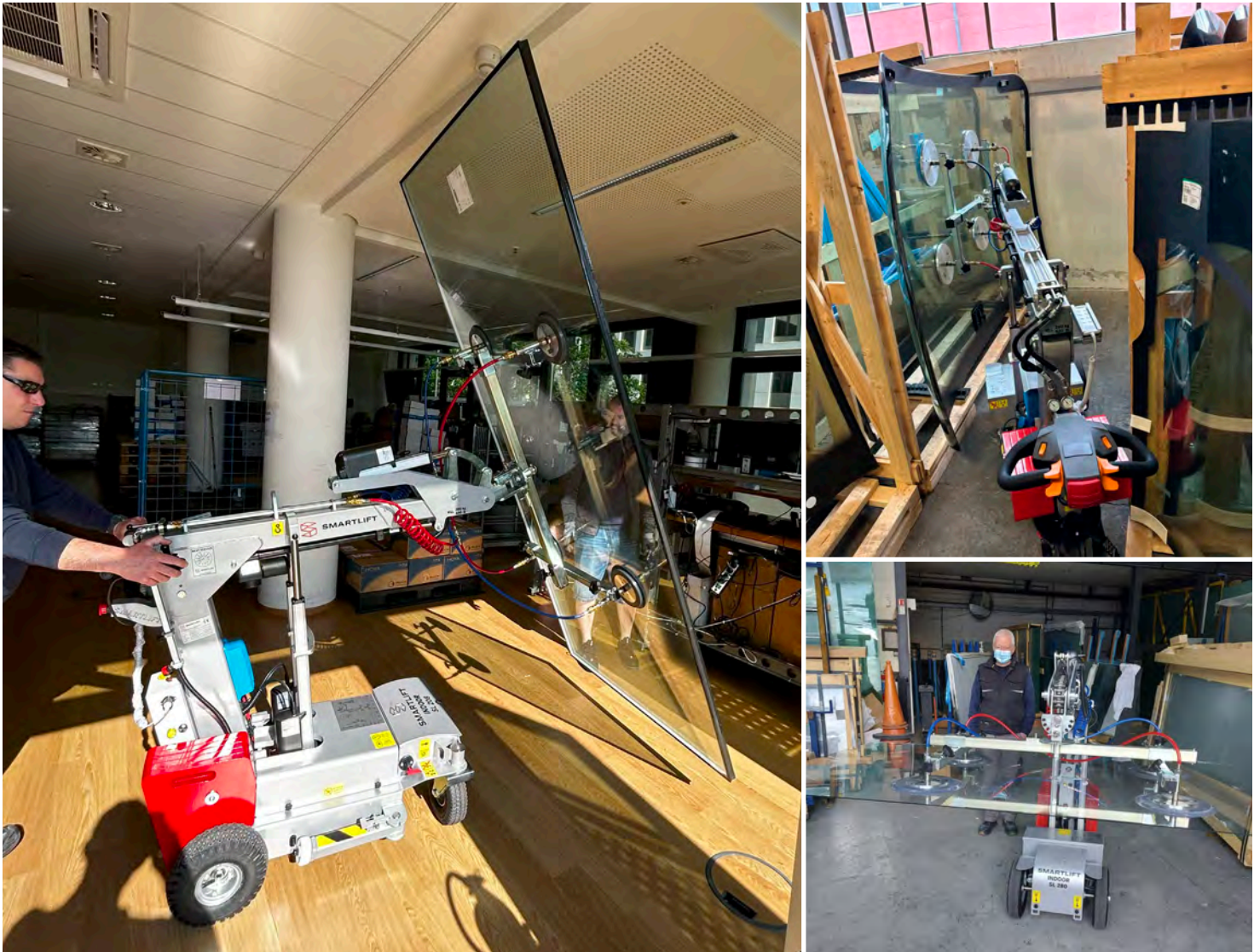


INDOOR MACHINES

TECHNICAL INFORMATION

	Lifting capacity arm in/out	Lifting height	Extension of arm	Tip from horizontal	Turning radius	Suction pads	L x W x H	Curb weight
SL 208	440 / 330 lbs	8.69 ft	1.64 ft	54° back 100° fwd	2.89 ft	4 x Ø8 in	5.48 x 2.43 x 4.20 ft	1060 lbs
SL 280	620 / 350 lbs	9.02 ft	1.64 ft	49° back 104° fwd	3.81 ft	4 x Ø12 in	7.09 x 2.07 x 4.36 ft	1080 lbs
SL 380	840 / 460 lbs	8.69 ft	1.64 ft	49° back 105° fwd	4.13 ft	4 x Ø12 in	7.45 x 2.23 x 4.36 ft	1170 lbs
SL 580	1280 / 620 lbs	7.67 ft	1.64 ft	43° back 105° fwd	4.79 ft	4 x Ø16 in	7.84 x 2.56 x 4.56 ft	1520 lbs

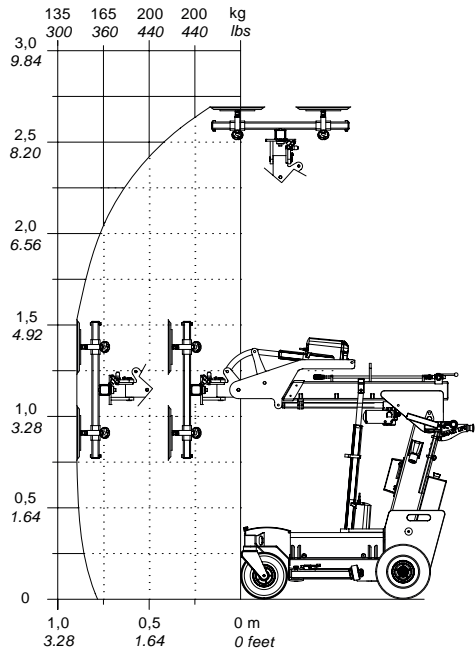
■ All indoor machines have rear wheel drive, electro-magnetic brake, and up to 10 hours operation when fully charged.



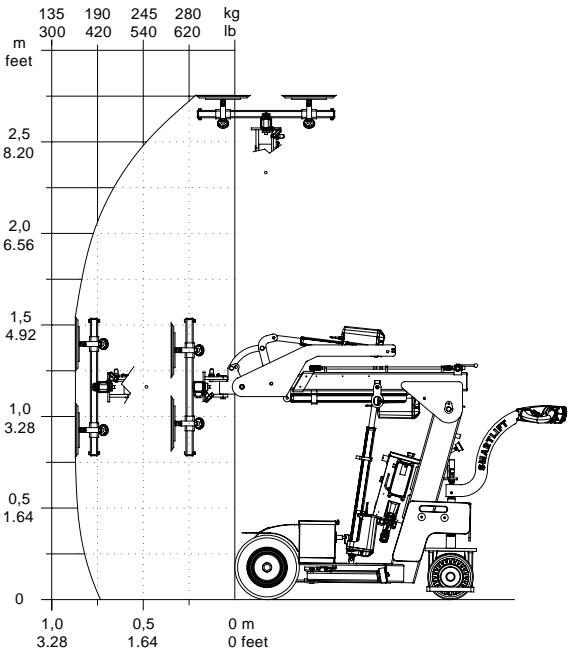
INDOOR MACHINES

LOAD CHARTS

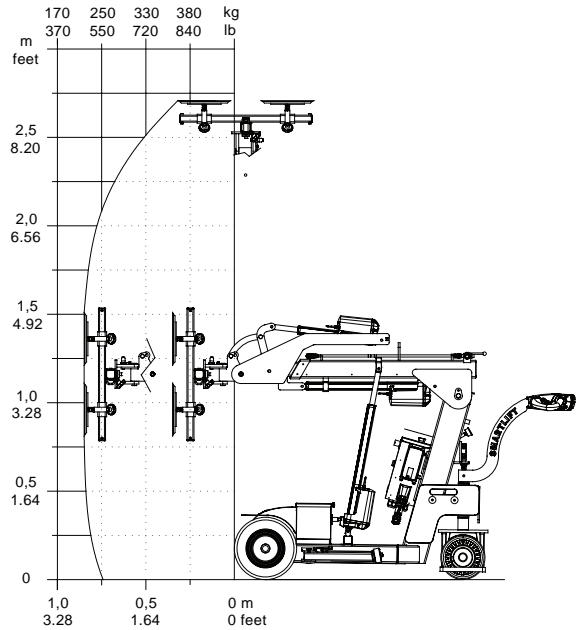
SL 208 INDOOR



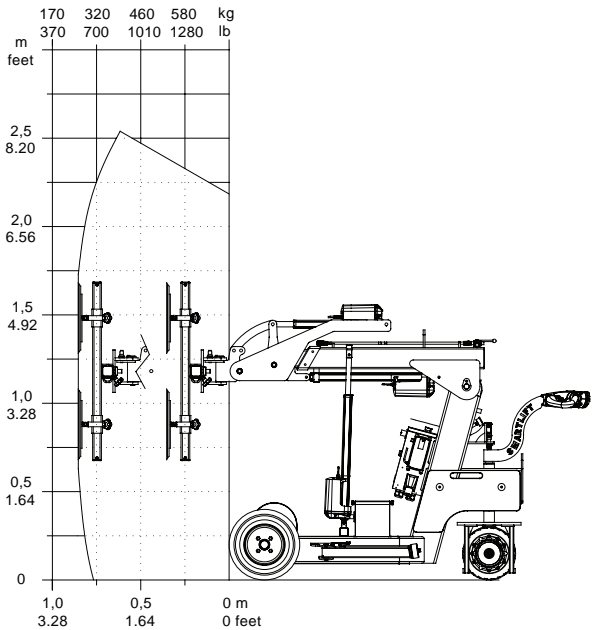
SL 280 INDOOR



SL 380 INDOOR



SL 580 INDOOR



SMARTLIFT OUTDOOR MACHINES

WHAT CHARACTERIZES OUTDOOR MACHINES?

- Strong and flexible machines with high lifting height and capacity
- Built for great performance outdoor and on uneven surfaces
- Front-wheel drive
- Suitable for both outdoor and indoor work
- Available in many sizes, from ultra-compact to extremely long reach
- No certification required for operation (check local legislation)
- Available with a variety of tools and accessories



WATCH VIDEOS



Extend and retract lateral support legs

The support legs on your Smartlift are to be used when lifting and/or transporting loads.

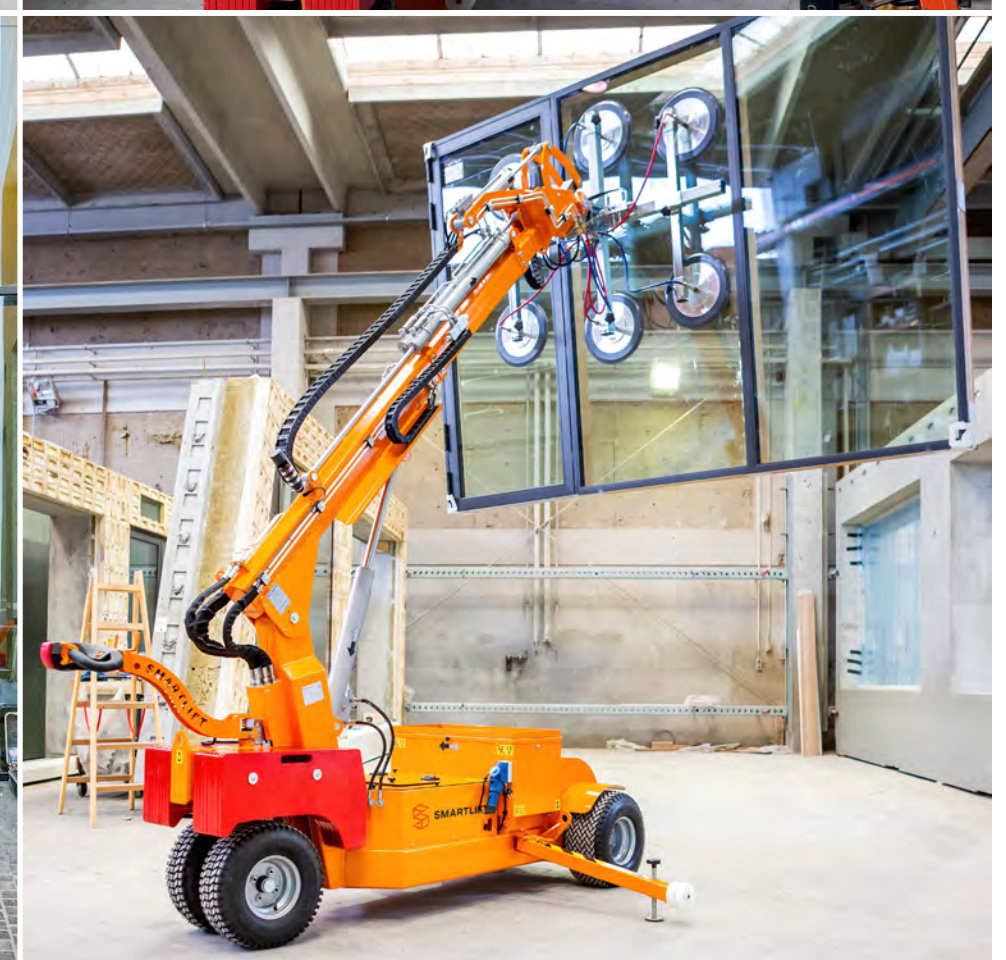


Sideways yoke positioning

Position the yoke on your Smartlift. This function is perfect for moving through tight spaces like doorways and narrow corridors.



Rotating yoke by remote



OUTDOOR MACHINES

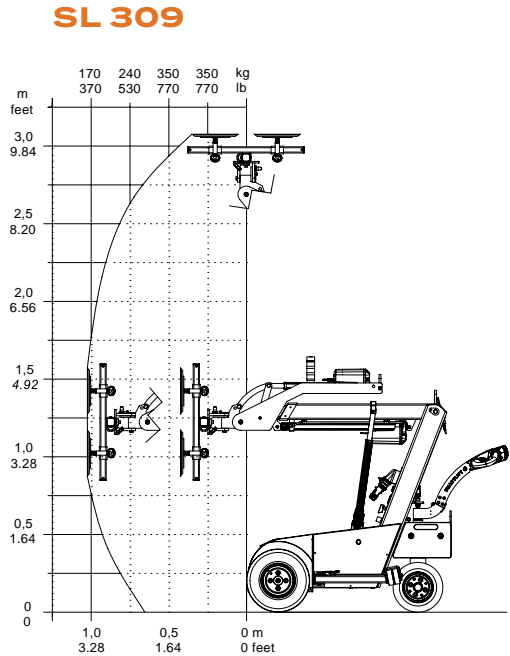
TECHNICAL INFORMATION

	Lifting capacity arm in/out	Lifting height	Extension of arm	Tip from horizontal	Turning radius	Suction pads	L x W x H	Curb weight
SL 309	700 / 370 lbs	10.07 ft	1.97 ft	35° back 135° fwd	3.67 ft	4 x Ø12 in	6.92 x 2.69 x 4.63 ft	1370 lbs
SL 409 HLE	950 / 220 lbs	11.98 ft	1.97 + 1.97 ft	53° back 131° fwd	4.82 ft	4 x Ø12 in	8.5 x 2.69 x 4.69 ft	1590 lbs
SL 409 HLE RT	950 / 220 lbs	11.98 ft	1.97 + 1.97 ft	53° back 131° fwd	4.82 ft	4 x Ø12 in	8.5 x 2.69 x 4.69 ft	1610 lbs
SL 609 HLE	1320 / 370 lbs	13.62 ft	2.30 + 2.95 ft	36° back 98° fwd	5.28 ft	4 x Ø16 in	9.15 x 2.72 x 5.05 ft	2070 lbs
SL 609 HLE RT	1320 / 330 lbs	13.94 ft	2.30 + 2.95 ft	32° back 83° fwd	3.81 ft	4 x Ø16 in	9.15 x 2.72 x 5.05 ft	2090 lbs
SL 809	1760 / 200 lbs	19.69 ft	4.20 + 4.20 ft	44° back 80° fwd	6.89 ft	6 x Ø16 in	11.78 x 3.35 x 5.38 ft	3330 lbs
SL 1009	2200 / 620 lbs	15.26 ft	2.72 + 2.72 ft	44° back 80° fwd	6.89 ft	6 x Ø16 in	10.89 x 3.35 x 5.15 ft	3260 lbs

■ All outdoor machines have front wheel drive, electro-magnetic brake, and up to 10 hours operation when fully charged.

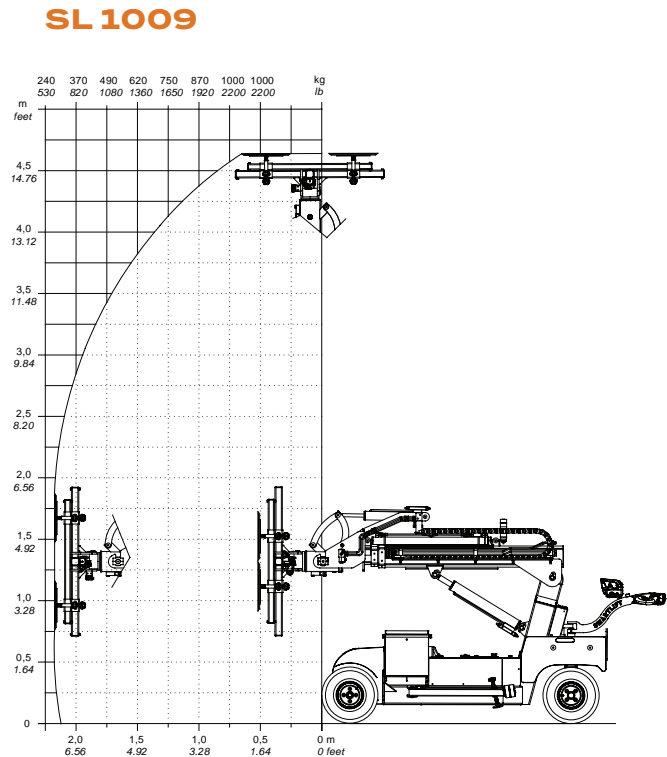
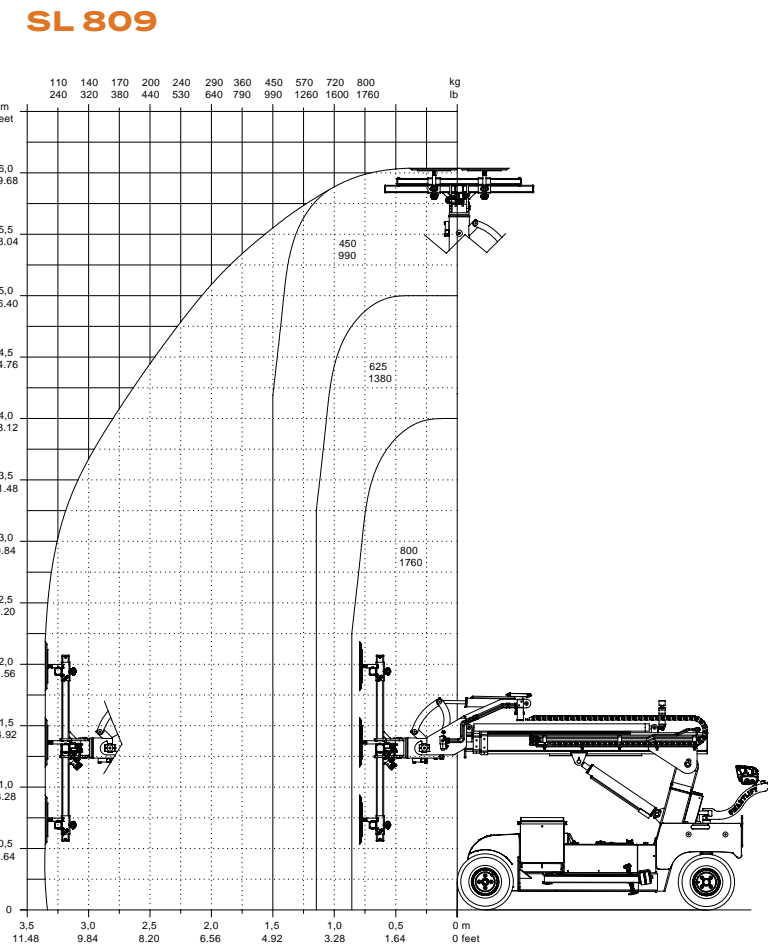
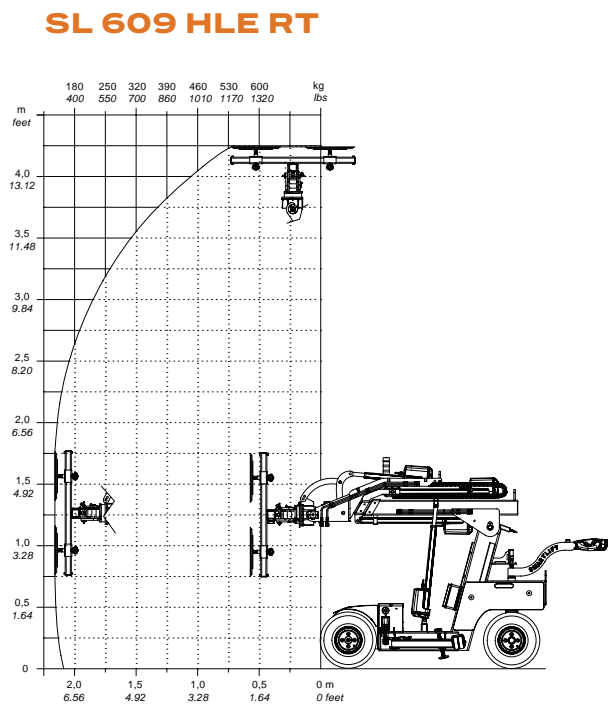
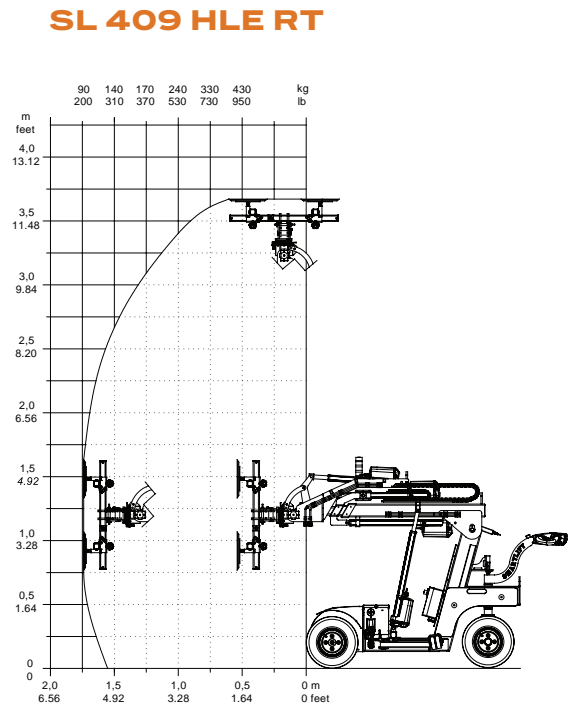
MACHINE TYPES

- **HLE** - High Lifter Electric
The machine has two extensions of the arm. Both extensions are operated with the remote control. The yoke is rotated manually.
- **HLE RT** - High Lifter Electric Rotating Yoke
The machine has two extensions of the arm. Both extensions are operated with the remote control. The yoke is rotated with the remote control.



OUTDOOR MACHINES

LOAD CHARTS



SMARTLIFT
MULTI-PURPOSE MACHINE

WHAT CHARACTERIZES AN SLX MACHINE??

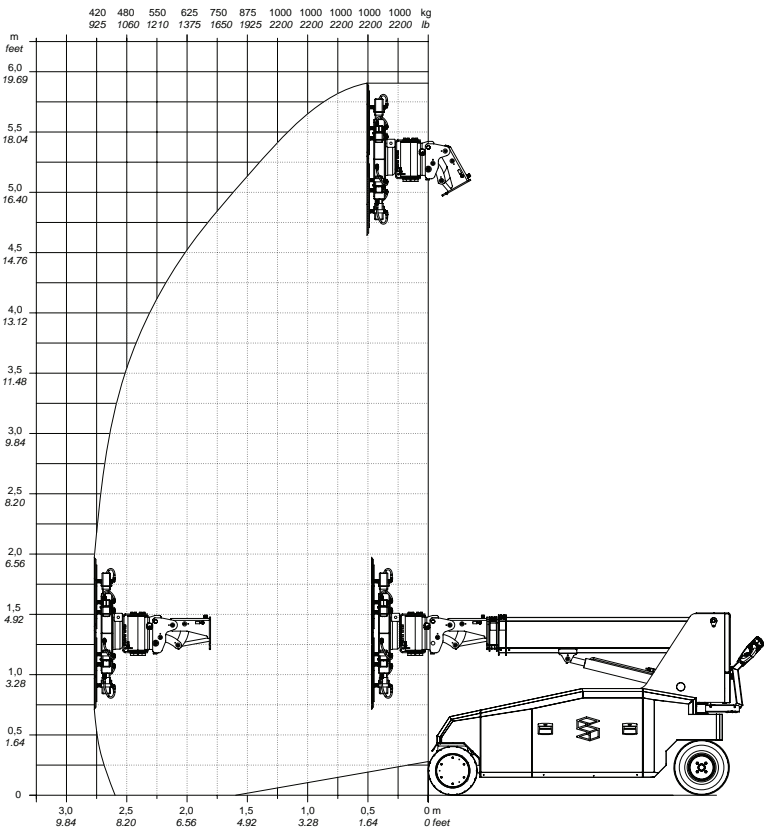
- Designed for many different lifting tasks
- Can be equipped with electric, hydraulic, standard and custom-built tools
- Quick-change system allows fast and easy tool changes
- Both functions and driving (driving is optional) can be controlled via remote control
- Power steering makes the machine easy to maneuver
- The yoke can pivot 88° to the side, allowing the load to be moved parallel to the machine and through narrow doorways
- A narrow chassis of 3.31 ft makes it suitable for lifting in confined spaces

	Lifting capacity arm in/out	Lifting height	Extension of arm	Tip from horizontal	Yoke rotation	Suction pads	L x W x H	Curb weight
SLX 2000 VACUUM	2200 / 925 lbs	17.22 ft	2 x 3.77 ft	65° back 98° fwd	infinite	6 x ø16 in cm	9.11 x 3.31 x 5 ft	4180 lbs

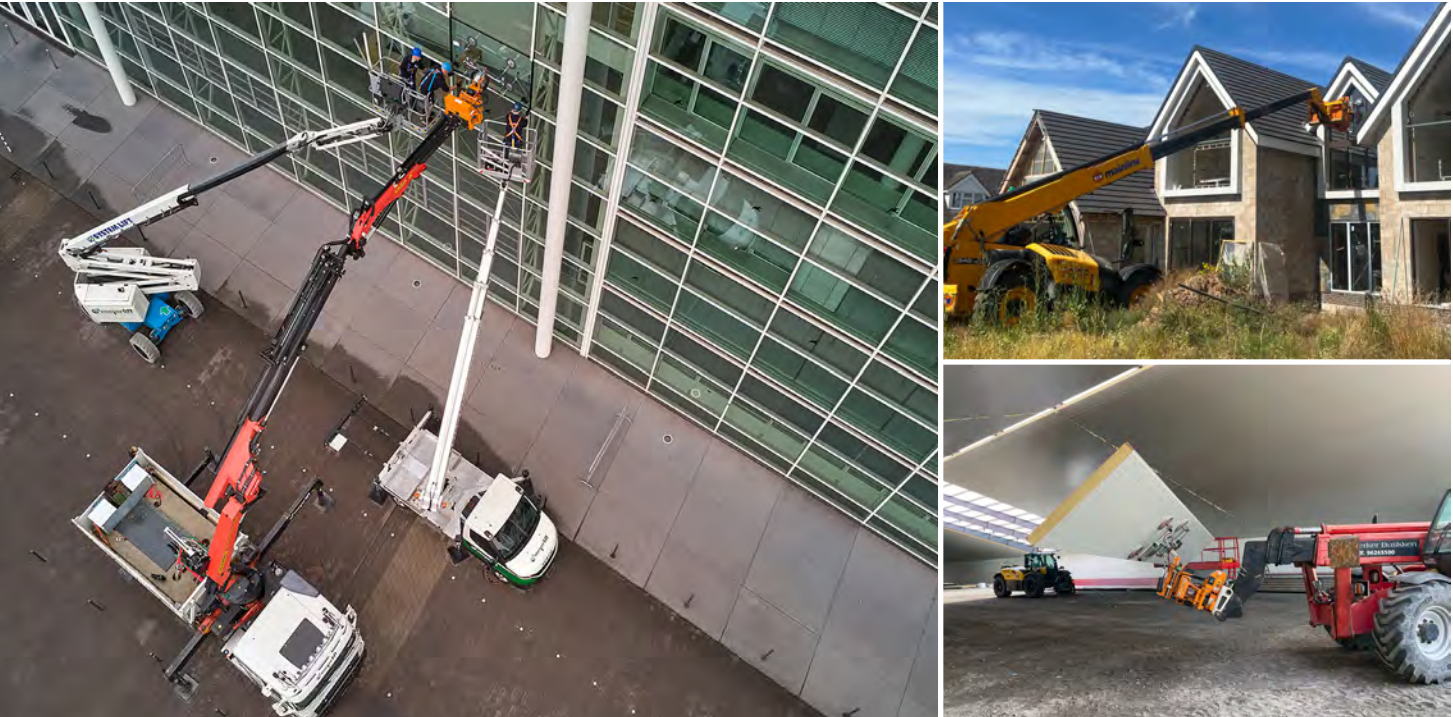
- All SLX machines feature front-wheel drive, power steering and up to 10 hours of operation on a full charge.



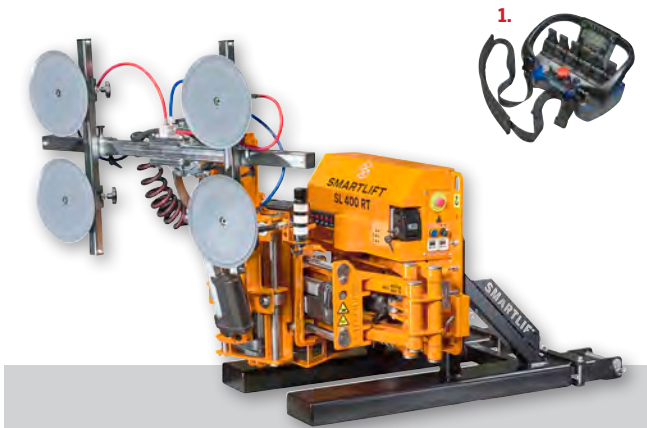
SLX 2000 VACUUM



SMARTLIFT
SL 400 RT SKYLIFTER



- The SL 400 RT Skylifter is a light and independent electric manipulator. With the Smartlift pallet fork adapter (optional) it's easy to mount it on any telescopic loader, crane etc.
- The SL 400 RT Skylifter is ideal for buildings where installation is under overhangs or at oblique angles. The Skylifter can rotate 320 degrees due to the turning head. The rotation is a great advantage during the window installation, because it gives great flexibility. Precision mounting and installation is easy using the cordless remote control (1).



TECHNICAL INFORMATION:

Lifting cap. arm in/out	880 lbs
Lifting height	Depends on parent
Extension of arm	15 in
Tip from horizontal	Depends on parent
Side shift	8 + 12 in
Running period	Up to 8 hrs
Suction pads	4 x Ø12 in
Curb weight	850 lbs



The SL 400 RT is mounted with a pallet fork adapter allowing for mounting on various brands of telehandlers and other parent machines with pallet forks.



The SL 400 RT Skylifter excels in extending reach, surpassing other window lifters in height and distance capabilities, making it an indispensable asset for your projects.

SMARTLIFT
SL 1300
TROLLEY



A rugged and self-propelled transport trolley with an electric lifter which raises up to 2.82 ft above ground level. The trolley has two side pockets for being lifted by a forklift.

- Self-propelled forward/reverse
- Independent wheels
- Puncture-proof tires
- Indicator for low voltage

TECHNICAL INFORMATION:

WWL / rated load	2866 lbs
Floor dimensions	6.17 x 2.30 ft / 8.79 x 2.30 ft
Floor height	1.84 - 2.82 ft
Total length	9.35 ft
Ground clearance	4 in
Operation time	Approx. 8 hrs
Turning radius	10.17 ft
Curb weight	1000 lbs

ACCESSORIES

A Smartlift offers more than just lifting capabilities. You have the option to purchase ramps for simpler transport in a van, a hook for moving elements, forks for transporting pallets, tires that don't leave marks, special suction cups, a cordless remote control, among other enhancements.

For a comprehensive list of available add-ons, please refer to the accessories catalog. We are always happy to help you select the best options for your machine and business needs.



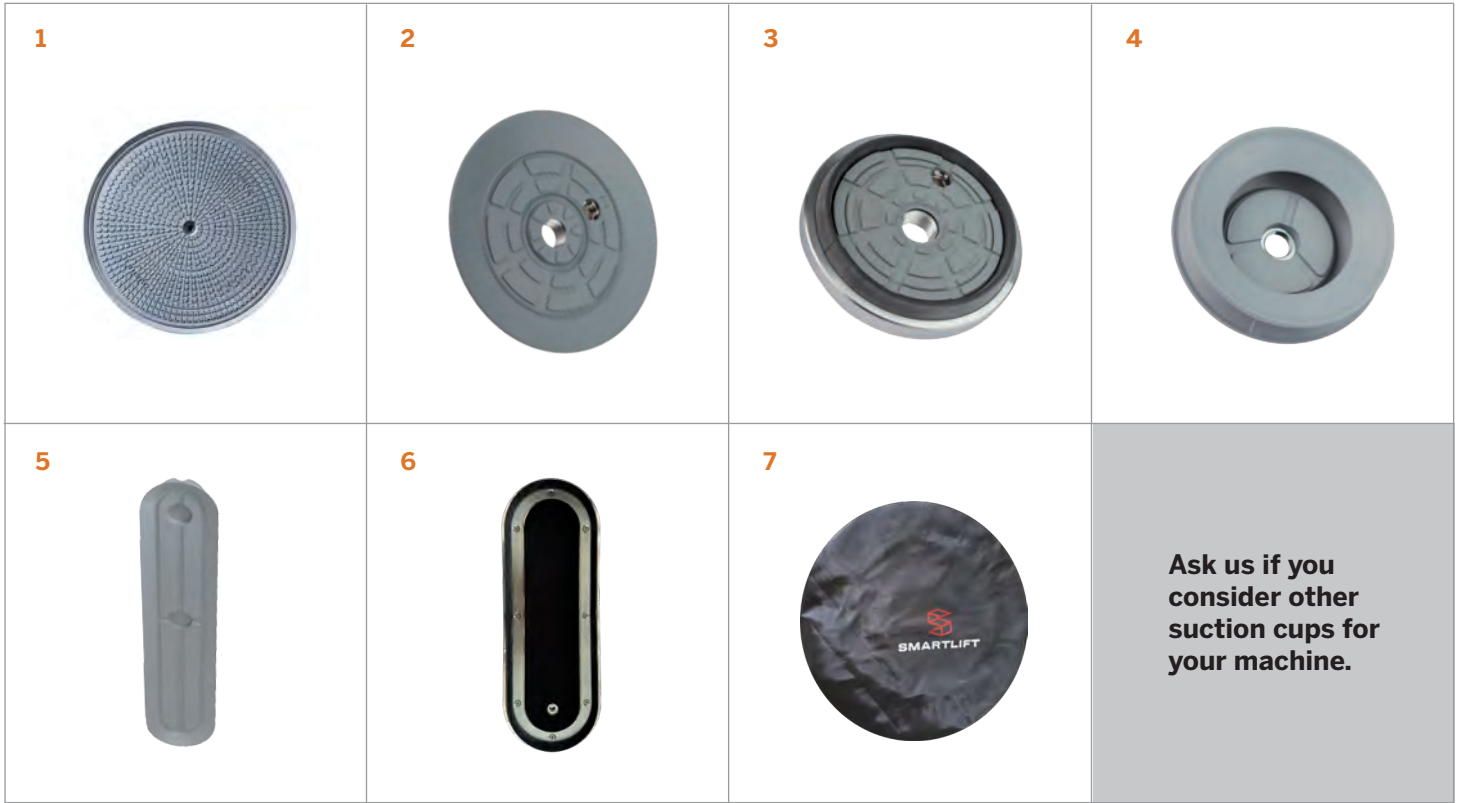
THE MOST POPULAR ACCESSORIES

- Ramps
- Forks
- Hook
- White non-marking tires
- Special suction cups
- Extenders
- Custom color
- Electric key switch
- Foldable handle
- Cordless remote control
- Trackunit

SUCTION CUPS

When you choose a Smartlift equipped with vacuum technology, it comes with SGF suction pads as standard equipment. To enhance the capabilities of your Smartlift, you have the option to purchase additional suction pads.

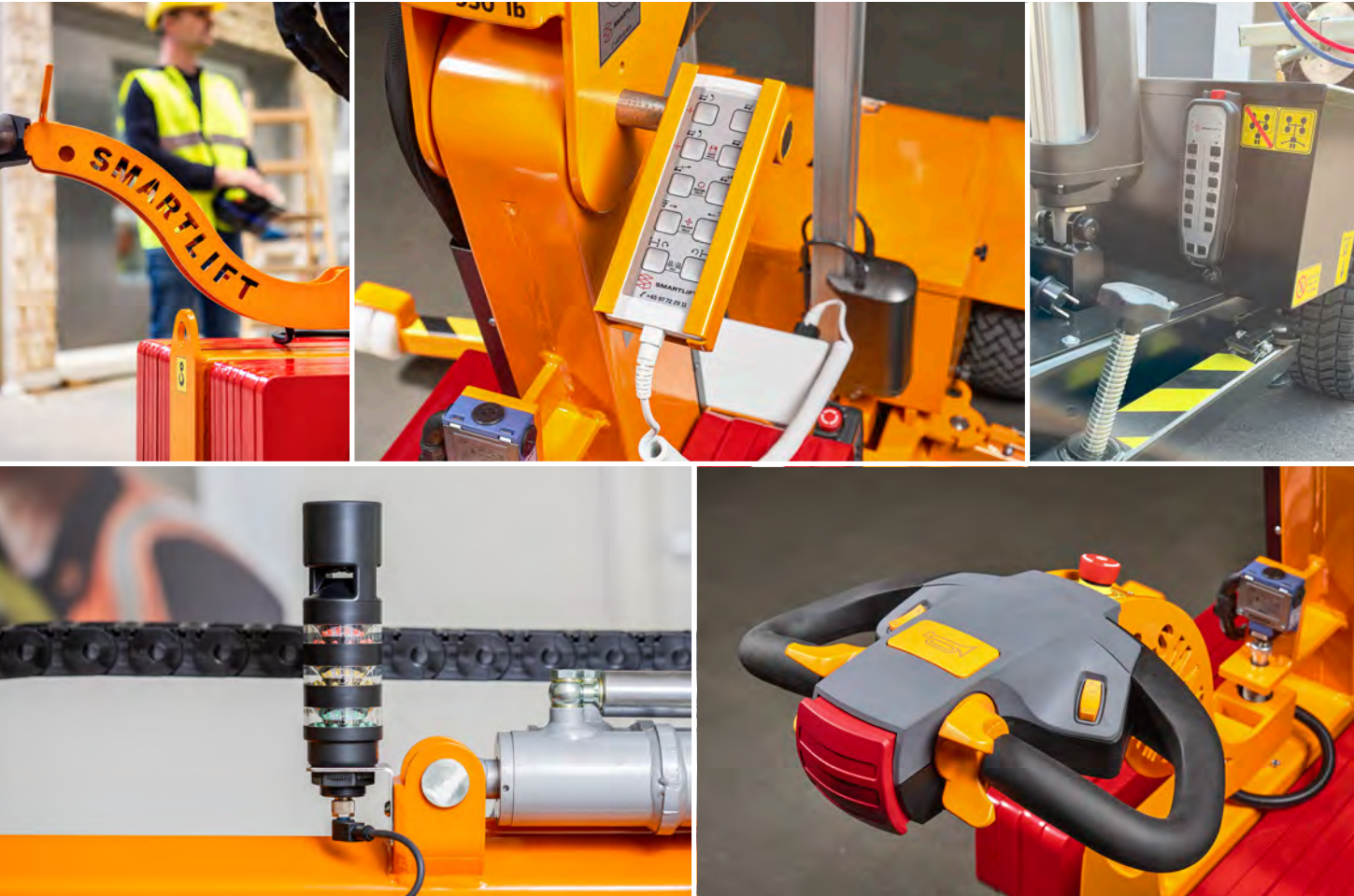
- 1 SGF suction pad**
This is the standard suction pad and is suitable for lifting glass with a completely smooth and flat surface.
- 2 SPU suction pad**
This pad handles glass with a smooth surface and can also lift elements that have minor irregularities.
- 3 SPK suction pad**
Designed for lifting elements such as Paroc panels and other materials with a less than completely smooth surface.
- 4 FSGPL suction cups**
These suction cups are suitable for curved and airtight surfaces.
- 5 SPLO suction pad**
An oval-shaped suction pad, ideal for handling thin metal sheets and other lightweight materials.
- 6 Oval suction pad**
Crafted for handling curved and uneven elements like windshields.
- 7 Protection cover**
We recommend using protection covers for the vacuum cups when not in use. This helps to maintain lifting capacity by protecting against dust and dirt.



SAFETY

The Smartlift ensures enhanced safety features for workplace operations. Utilizing a Smartlift reduces the need for manual handling, thereby decreasing the risk of injury to workers when positioning materials like glass, metal, or stone.

- **Support legs**
The stabilizing legs can be extended to improve stability during operations.
- **Emergency stop**
The machine includes an easily accessible emergency stop button that can halt all operations instantly to prevent accidents.
- **Low vacuum pressure alarm**
An alarm sounds if the vacuum pressure drops below the safe threshold, alerting operators to potential issues with suction.
- **Horn**
The steering handle includes a horn to warn nearby individuals of the machine's movements.
- **Fault alerts**
The system notifies operators with an alarm if there are any malfunctions in the machine or the vacuum system, allowing for immediate attention and resolution.
- **Light tower**
The light tower on the machine can either blink or emit a steady light in red, yellow, or green to indicate operational status, enhancing visibility and communication on busy sites.
- **Maintenance**
Regular maintenance checks are straightforward, helping to ensure the machine remains in optimal working condition.



TRACKUNIT

A Trackunit is a built-in IoT unit offering theft protection, remote diagnostics and enabling quick and precise service. It comes with a 36-month subscription, ready upon receipt. It is available as a built-in feature and as a retrofit option.

- **Theft protection and geofencing features**
With Trackunit, you can monitor your machine in real-time and establish geofence around your construction site. You will receive alerts if the machine exits the designated area. This feature helps you quickly locate your equipment, significantly reducing the risks of theft and unauthorized use.
- **Enhanced service response**
Upon your request, Smartlift can access your machine's data remotely for diagnostics, which allows for quicker and more precise diagnose and servicing.
- **Predictive maintenance and minimizing downtime**
Trackunit utilizes usage data to forecast maintenance needs and sends you alerts to prevent potential breakdowns, thereby enhancing the reliability of your Smartlift. You can also upload and manage service schedules through an online service log, keeping all maintenance records organized and accessible.
- **Trackunit user interface**
An app for your phone specifically developed for service technicians and operators. It gives you access to fault codes, graphical overview of machine usage, battery status, damage reporting and much more. Furthermore, a desktop application for fleet overview, setting alarms, deep dives into machine health, usage, and location, and a range of reports.



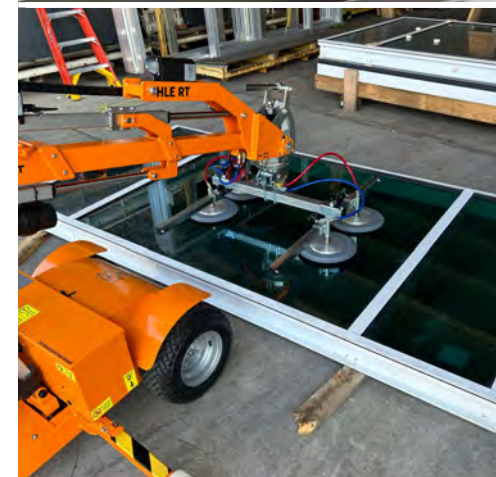
GLASS

Smartlift is an invaluable team member for glass handling and window installation. It smoothly lifts glass from pallets and trucks and excels in positioning windowpanes for interior installations by angling them through apertures for precise placement. With Smartlift, the process is streamlined and safe, making it an essential tool for any glass-related construction project.



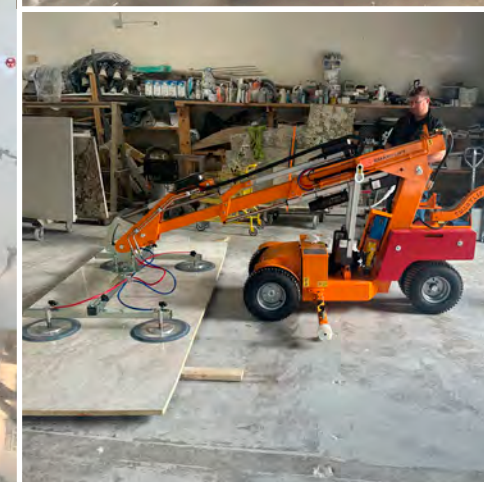
METAL

Smartlift excels in handling metal by securely gripping sheets without scratching them. It retrieves and transports vertical metal sheets from storage to installation sites, crucial for metalworking environments. Using vacuum suction or hooks, Smartlift moves welded structures efficiently and without damage, enhancing workflow and ensuring precision and safety in operations where these are essential.



STONE

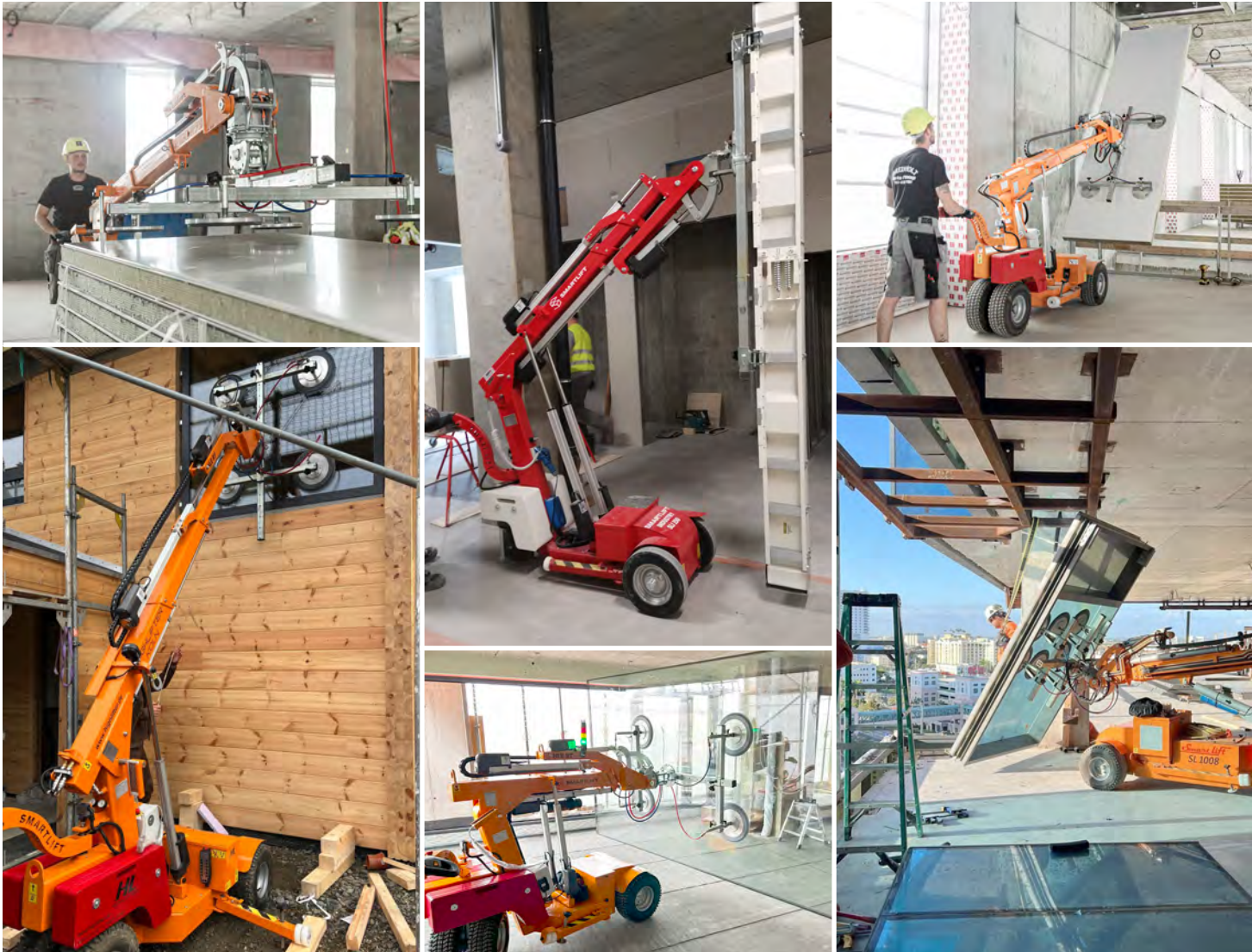
Smartlift excels at transporting and positioning heavy stone slabs, including granite and marble, securely and efficiently. It can precisely hold stone slabs for installations, such as marble walls around fireplaces or stone tabletops, ensuring flawless placement. The vacuum system safely manages fragile surfaces and premium materials without marking them, making Smartlift essential for perfect stone installation projects.



CONSTRUCTION

Smartlift is a crucial tool in the construction industry because it enhances efficiency and safety on job sites. With its ability to handle and position heavy and delicate materials such as glass, metal, and stone slabs precisely, Smartlift reduces the physical strain on workers and minimizes the risk of workplace injuries. It ensures materials are not damaged during movement, which is particularly important

when dealing with expensive elements. Additionally, the flexibility to work with various accessories makes it adaptable to different tasks, from window installation to handling structural components. Smartlift helps construction teams complete projects faster and with less effort, allowing businesses to take on more and larger projects, boosting their potential for growth and success.



SL 608 OUTDOOR

The challenge is how to handle the Paroc panels, with a length of more than 13 ft, are too big to handle manually. The team uses a SL 608 High Lifter with rotating yoke to handle and position the panels thereby avoiding putting too much strain on the body - and reduce the risk of material damage.

Customer: **Breinholt Service & Montage**



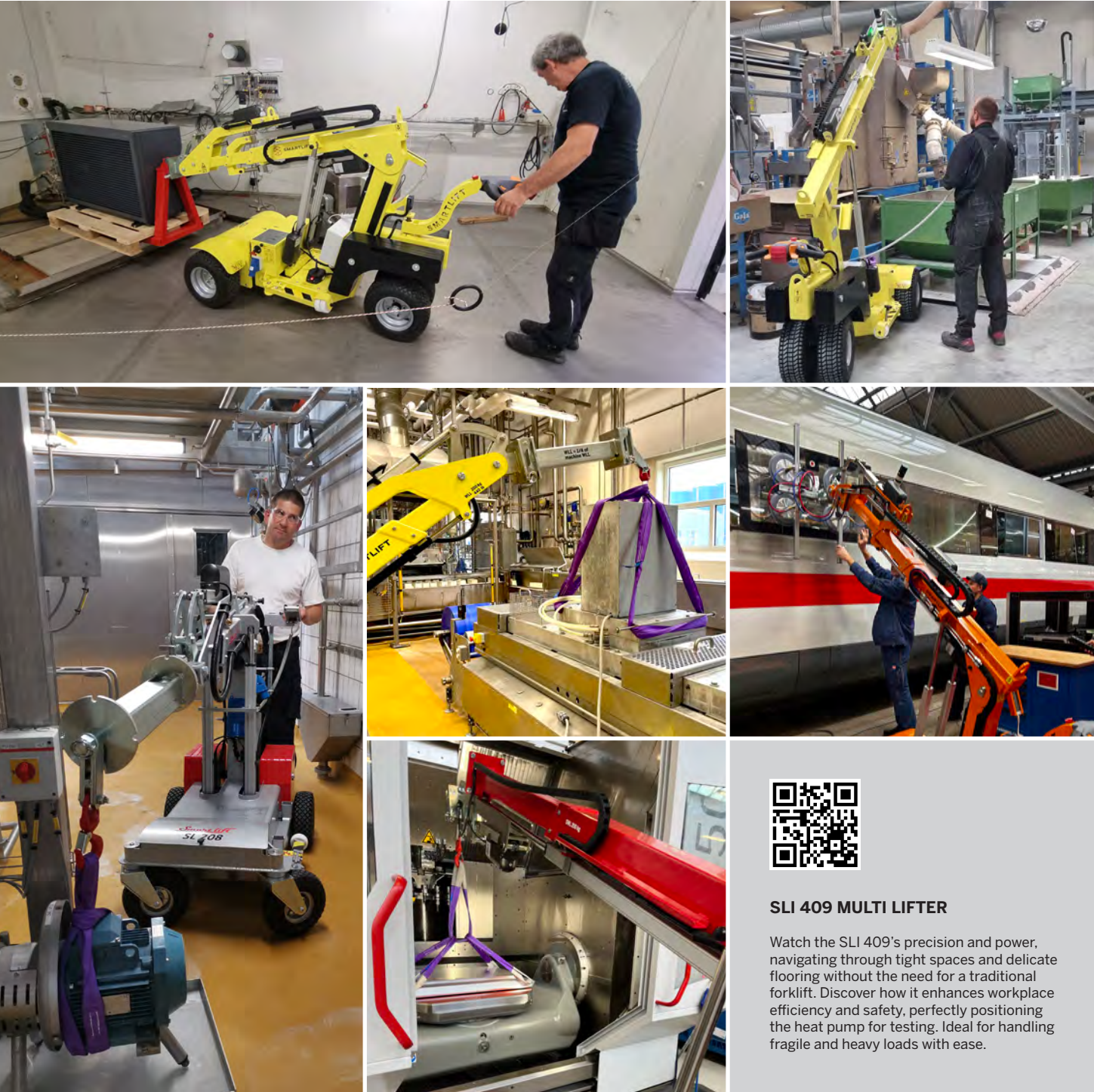
SL 408 OUTDOOR

How does a Smartlift work and what difference does a glass lifter make for a professional glazier? In this video you see a professional glazier team working with a Smartlift in a high-rise building; much safer and much more efficient. With professional glass lifting equipment your project is in safe hands.

INDUSTRY

Smartlift proves its value in various industrial sectors through its maneuverability and precision. Its compact design allows it to access areas where larger machinery like trucks cannot fit, making it ideal for tight spaces. It is ideal for food production due to its zero emissions and its ability to precisely and powerfully handle delicate ingredients. In metalworking, Smartlift precisely positions heavy components, crucial for assembly processes. The chemical industry

benefits from its ability to handle hazardous materials safely and accurately. Additionally, for vehicle maintenance, such as replacing doors and windows on buses, trucks, and trains, Smartlift's remote control allows for exact placement, ensuring installations are secure and correct. This precision and flexibility make Smartlift indispensable for efficient, safe operations.



SLI 409 MULTI LIFTER

Watch the SLI 409's precision and power, navigating through tight spaces and delicate flooring without the need for a traditional forklift. Discover how it enhances workplace efficiency and safety, perfectly positioning the heat pump for testing. Ideal for handling fragile and heavy loads with ease.



SMARTLIFT

8927 & 8929 J Street
Omaha, NE 68127

Phone: 402-215-8080
smartliftus@smartlift.com

www.smartlift.com



Website



Youtube